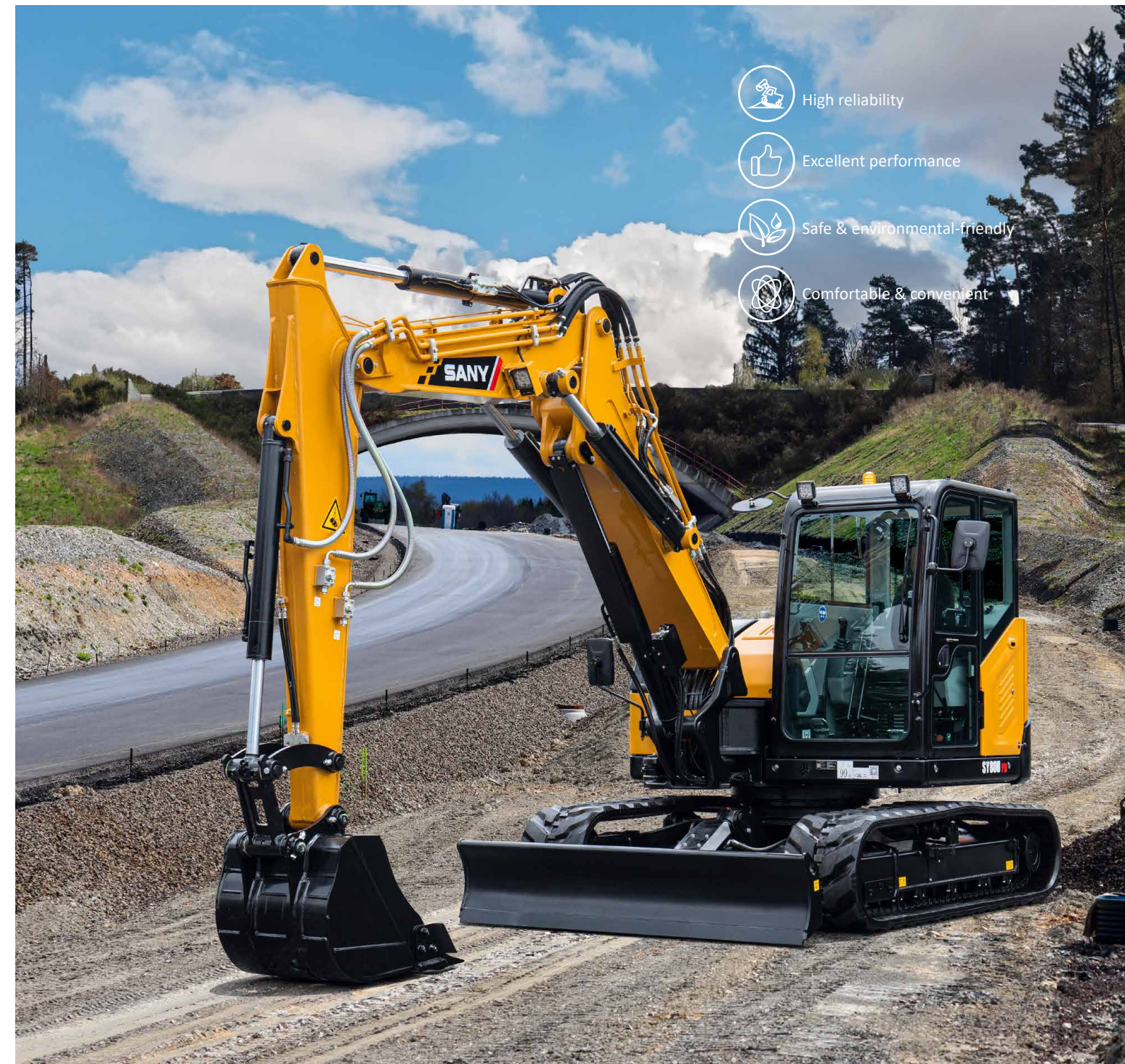


SY80U PB

Engine power / **Operating weight**
53.7kW/2100rpm / 9580kg



High reliability



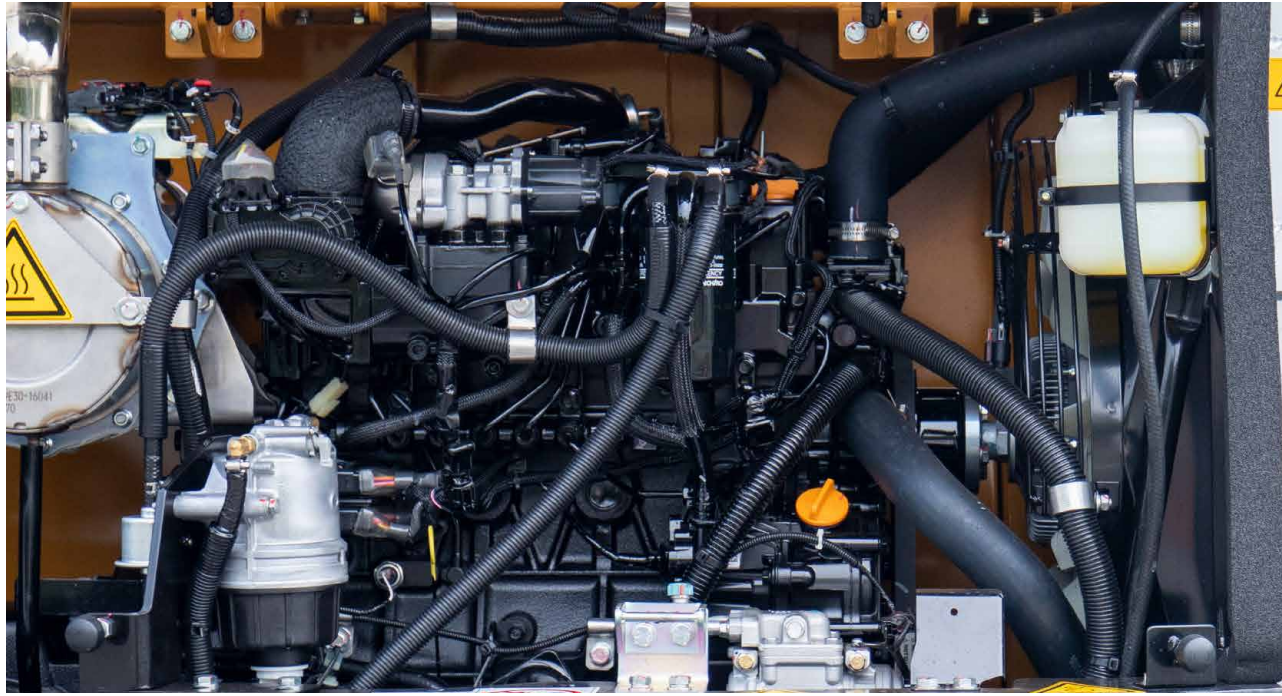
Excellent performance



Safe & environmental-friendly

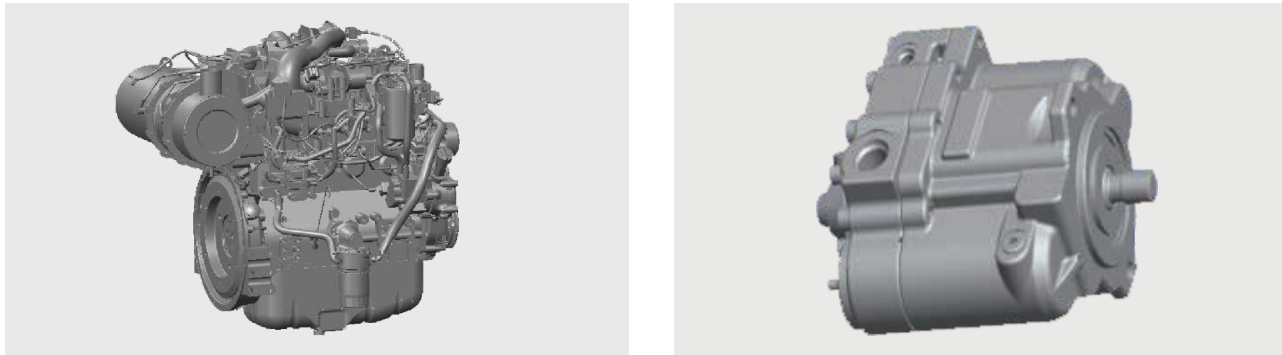


Comfortable & convenient

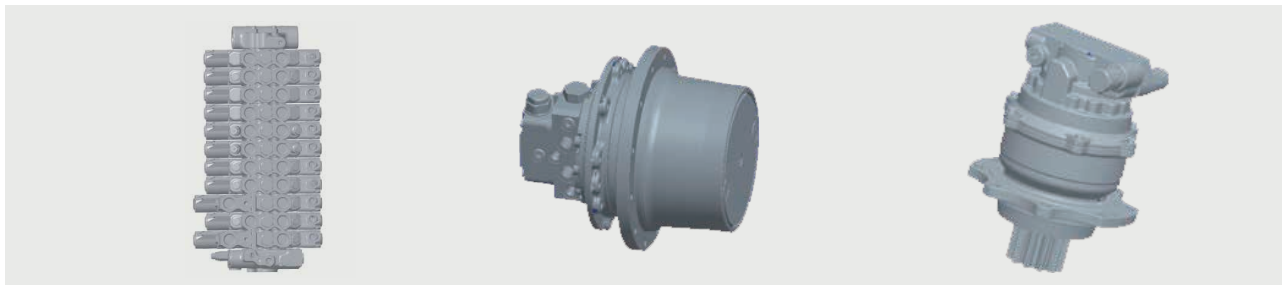


Strong power

▶ Adopt SANY special Yanmar engine. The power is strong and the performance is reliable.



▶ The E-controlled pump can precisely match the engine power to achieve maximum fuel economy efficiency. Using Borgwarner's programmable electronic silicon clutch fan which lower the fuel consumption and noise. The new design of the strengthened structural parts which make the machine have a longer service life.



The core of the best configuration

7" large-sized high-precision air filter as standard configuration, filter precision is up to 99.9%. Large capacity design, long service life and low maintenance cost. Electronic alarm device, which is safe and effective.



Standard with large capacity, high filtration accuracy fuel coarse filter and fuel fine filter, double protection, higher filtration efficiency, and the use of long life design make the service life twice longer.

Both coarse filtration accuracy of 4µm and fine filtration accuracy of 5 µm can filter out the small impurities to ensure the safe use of the engine.

Maintenance within easy reach

Air filter, fuel oil coarse filter, fuel oil fine filter, engine oil filter and pilot filter element are within easy reach and can be maintained very conveniently.

Detachable radiator dust screen is convenient to be washed.



Environmental protection friendly

Recycling

All-metal covering part is used, is recoverable and environmental-friendly; the materials liable to pollution like glass fiber reinforced plastics are not used.



SY80U PB
All-metal covering parts are used

Environmental friendly

The engine meets latest standard of stage V and Tier 4f. Aluminum radiator and oil cooler are used. Environmental paint is used to minimize environmental pollution. Garden-type manufacturing site.



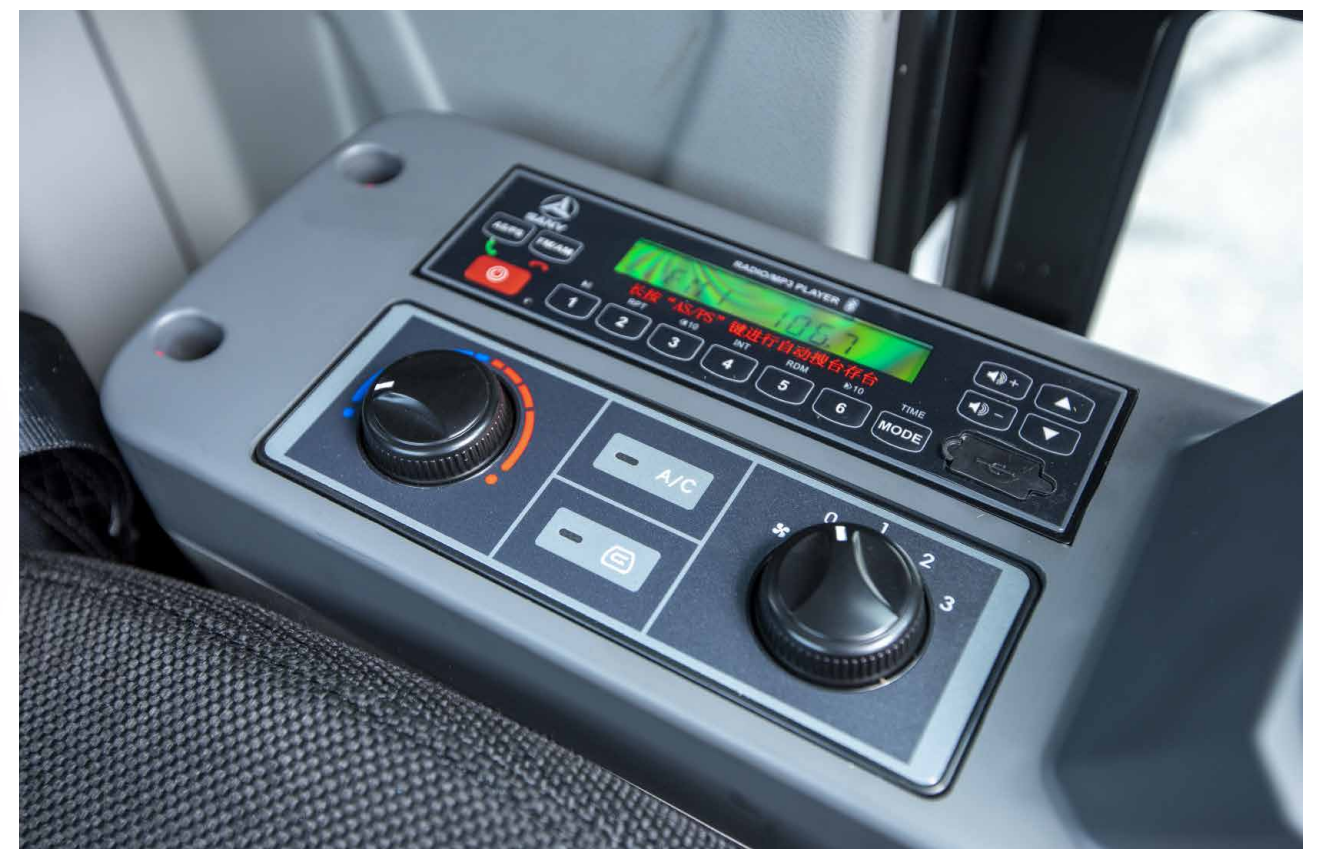
Comfort and easy operation

With high-grade trim parts, wide view, suspended seat, excellent vibration damping and noise reduction performance, the driving experience will be more comfortable.

High performance air conditioner outputs air in stereoscopic mode and makes inside climate more comfortable.

Charging port, cup holder, storage compartment, reading light, suspension seat and multi-function handle are all equipped.

The display is upgraded to a multi-functional touch screen, which makes the operation more convenient and adapts to 20 types of attachment with switching function.



Strengthen the structure

.01 Arm

With the wear-resisting plate adopted on the front end of the arm, the service life is longer.

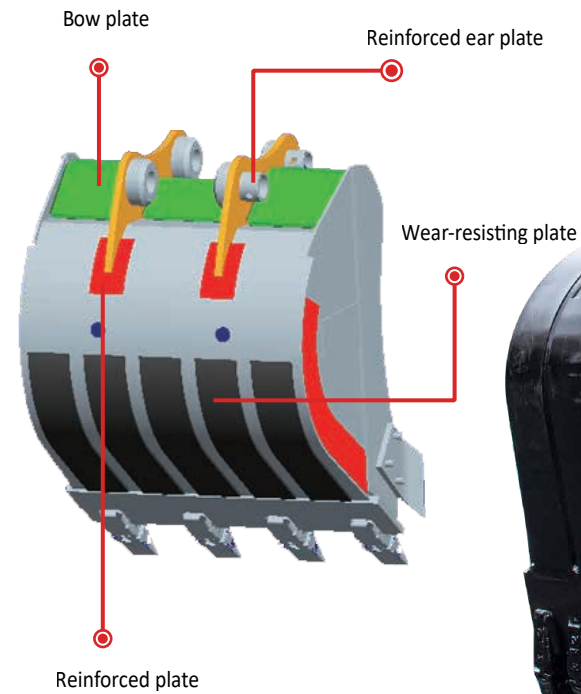
With new tungsten carbide technology on the front end face of the arm, and the wear resistance is doubled.



wear-resisting plate+ thicken plate

.02 Bucket (non-standard)

The bucket botom is equipped with wear-resisting plate, reinforced back plate and ear plate so that its service life is improved by over 50%.



.03

The rear support and center support of the boom are forged to avoid local welding stress concentration and improve durability.

The key parts are reinforced steel envelope, which is more suitable for harsh working conditions.

.04 Undercarriage

Carrier wheel is replaced by thrust wheel, which is done for the first time in the industry. The service life is doubled. The fixture of carrier wheel is reinforced on both sides so that the structure is more sturdy, durable and reliable.



Complete research development and test system

Complete research, development and test system is the strong backup for excellent performance.

It has established complete machine endurance test center with full functions. Each model of excavator must be subjected to over 2,000h field excavating test.

Key components like working device, cab and hydraulic components etc. must be subject to fatigue test over 800,000 times.



Advanced manufacturing technology

Advanced manufacturing technology is a reliable guarantee for producing excellent products.

SANY has RGV assembling line and fullautomatic welding robots, and possesses high precision machining equipment and precise machining center.

SANY's manufacturing and assembling lines won five-star national site in 2013 and national quality award in 2014.



Safety configuration

Safety configuration of national standard

Meet safety standard of many regions including China, EU and North America etc. SY80U PB cab adopts ROPS structural design.



Excellent performance

Load-sensitive

SANY utilizes load-sensitive system which features higher operating efficiency, better control performance, excellent flat ground capacity and outstanding microoperation performance and is capable of providing almost perfect operating feeling.

	SY80U PB
Hydraulic system	load sensing system
System characteristics	Able to sense tiny change of the load and adjust flowand pressure from time to time for realizing perfect control performance
Advantages and disadvantages	Movement speed is irrelevant to the load

Special configuration

The SY80U PB is available in a variety of special configuration options to meet diverse needs of customers.

Arm configuration

2050mm standard arm (standard configuration)

1622mm short arm (optional configuration)

Track configuration

450mm rubber track (standard configuration)

450mm steel track (optional configuration)

Bucker configuration

No bucket (standard configuration)

0.28m³ bucket

Cab configuration

With air conditioner (standard configuration)

Beacon light

Other special configuration



Parts warehouse & service network

- Parts Warehouse: **500** parts warehouses
- ▲ Service Network: **600** service networks and **4,000** service engineers



Technical specifications

Specification		Main performance	
Operating weight	9580kg	Traveling speed (high/low)	4.5/2.5 km/h
Model	Yanmar 4TNV98CT	Swing speed	11rpm
Type	4-cylinder/4-stroke/inline/ water cooled/diesel	Gradeability	70% / 35°
Rated power	53.7kW/2100rpm	Ground pressure	40kPa
Maximum torque	290Nm/1350rpm	Digging force of bucket	59kN
Displacement	3.318L	Digging force of arm	44.5kN

Capacity of oil and coolant		Travelling section	
Fuel tank	100L	Upper roller	1
Hydraulic oil tank	120L	lower roller	5
Engine oil	10.2L	Standard crawler	450mm rubber track
Cooling system	12L		
Final drive	2x1.2L		

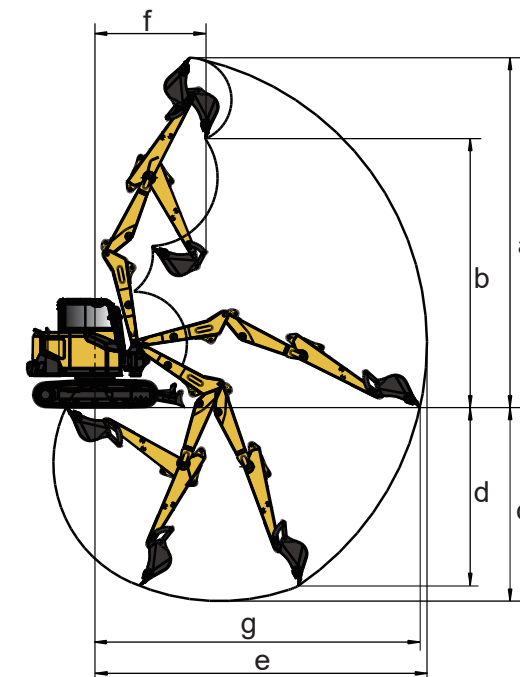
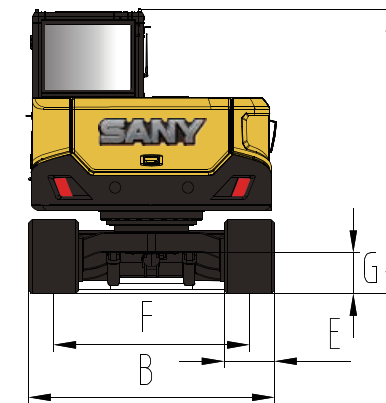
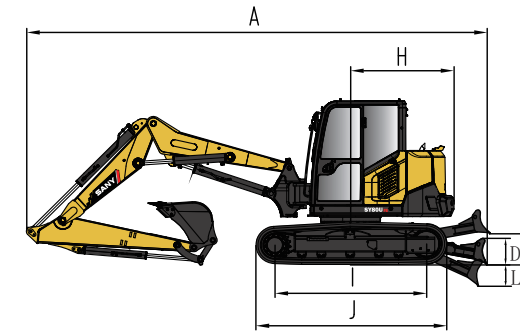
Table of lifting capacity

Rated Lift Capacity(Kg)-Dozer blade down									
Load point height	Radius						Digging reach		
	4m		5m		6m		MAX.		
									mm
6m	*2995	2045					*1970	1165	4650
5m	*3150	2065	*3160	1395			*1525	930	5605
4m	*3350	1995	*2875	1370	*1235	995	*1645	890	6210
3m	*3565	1860	*3185	1305	*1060	960	*1380	795	6579
2m	*3680	1740	*3010	1235	*1195	910	*1285	740	6755
1m	*3605	1535	*2855	1130	*1180	870	*1260	730	6755
0m	*3470	1460	*2670	1080	*1710	805	*985	730	6580
-1m	*3430	1440	*2635	1065	*2055	835	*1065	805	6215
-2m	*3475	1465	*2670	1080			*1245	940	5615
-3m	*3620	1540					*1680	1265	4670

Rated Lift Capacity(Kg)-Dozer blade up									
Load point height	Radius						Digging reach		
	4m		5m		6m		MAX.		
									mm
6m	*1780	2045					*1530	1165	4650
5m	*1875	2065	*1815	1395			*1175	930	5605
4m	1975	1995	1790	1370	1235	995	*1270	890	6210
3m	2100	1860	1720	1305	1060	960	1065	795	6579
2m	2165	1740	1625	1235	1195	910	1000	740	6755
1m	2125	1535	1540	1130	1180	870	980	730	6755
0m	2040	1460	1485	1080	955	805	765	730	6580
-1m	2020	1440	1465	1065	1140	835	830	805	6215
-2m	2045	1460	1480	1080			975	940	5615
-3m	2130	1540					1310	1265	4670

1. This table is for the state of maximum angle between two-piece boom and the bucket is not included.
 2. * indicates the lifting force limited by the hydraulic system.
 3. The lifting capacities are based on ISO 10567 and do not exceed 75% of the static tilt load of the machine or 87% of the hydraulic lifting capacity of the machine.
 4. The first piece of boom length:2190mm; The second piece of boom length:2040mm; Arm length: 2050mm.

Machine dimensions



Overall dimensions (mm)	SY80U PB
A. Overall length (in transportation state)	7010
B. Overall width	2200
C. Overall height (in transportation)	2550
D. Dozer blade height	410
E. Standard track plate width	450
F. Lane	1750
G. Minimum ground clearance	365
H. Rear radius	1585
I. Undercarriage length	2315
J. Length of track on ground	2915
K. Max. bolade height above the ground	480
L. Max. lowering blade depth	325

Operation range (mm)	SY80U PB
a. Maximum digging height	8100
b. Maximum unloading height	6160
c. Maximum digging depth	4520
d. Maximum digging depth with vertical boom	4150
e. Maximum digging distance	7740
f. Minimum slewing radius	2590
g. Maximum reach at ground level	7570

Standard configuration

Power system	Cab	Traveling body of undercarriage
12V/3kw starter motor	• Soundproof steel structure cab	• Traveling motor guard plate
12V/80A alternator	• Reinforced light glass	• Hydraulic tension device of tracks
Dry type dual element air filter	• Rubber shock absorber	• Driving wheels
Barrel oil filter	• Openable front upper window glass	• Thrust wheels
Barrel diesel filter (Coarse and fine)	• Rear window emergency exit	• Reinforced track with pin seal
Radiator with safety net	• Silent wiper with washer	• 450mm rubber track shoes
Radiator auxiliary water tank	• Mechanical suspension seat	• Bottom cover plate
Fan hood	• AM-FM radio with blue teeth	• Dozer blade cylinder guard plate
Yanmar engine	• Pedals and floor mat	
Automatic idle system	• Speaker and rearview mirror	
	• Seat belt and fire extinguisher	
	• Water cup holder and reading lamp	
	• Cigar lighter and ashtray	
	• File box	
	• Pilot controlled cut-off lever	

Standard configuration

Hydraulic system	Front-end working device	Air conditioning system
Control valve with overflow valve	• All-welded box-type boom	• Air conditioning
Electric main pump	• Deflection boom	• A/C control panel
Return oil filter	• Deflection head	
Suction filter	• Welded linkage rod	
Pilot oil filter	• Dust seal ring	
	• Pin	

Slewing platform of superstructure	Indicator lamp	Others
Fuel oil level	• Charging indicator lamp	• Breaker pipeline
Hydraulic oil level	• Walking alarm lamp	• Quick couple pipeline
Cathode switch		• Multi-function handle levers
		• Anti-explosion valve of boom and stick
		• Fuel pump
		• LCD with GPS function