

SINGLE DRUM ROLLER



SANY
ROAD MACHINERY UK & Ireland

QUALITY CHANGES THE WORLD

SSR130C-10H

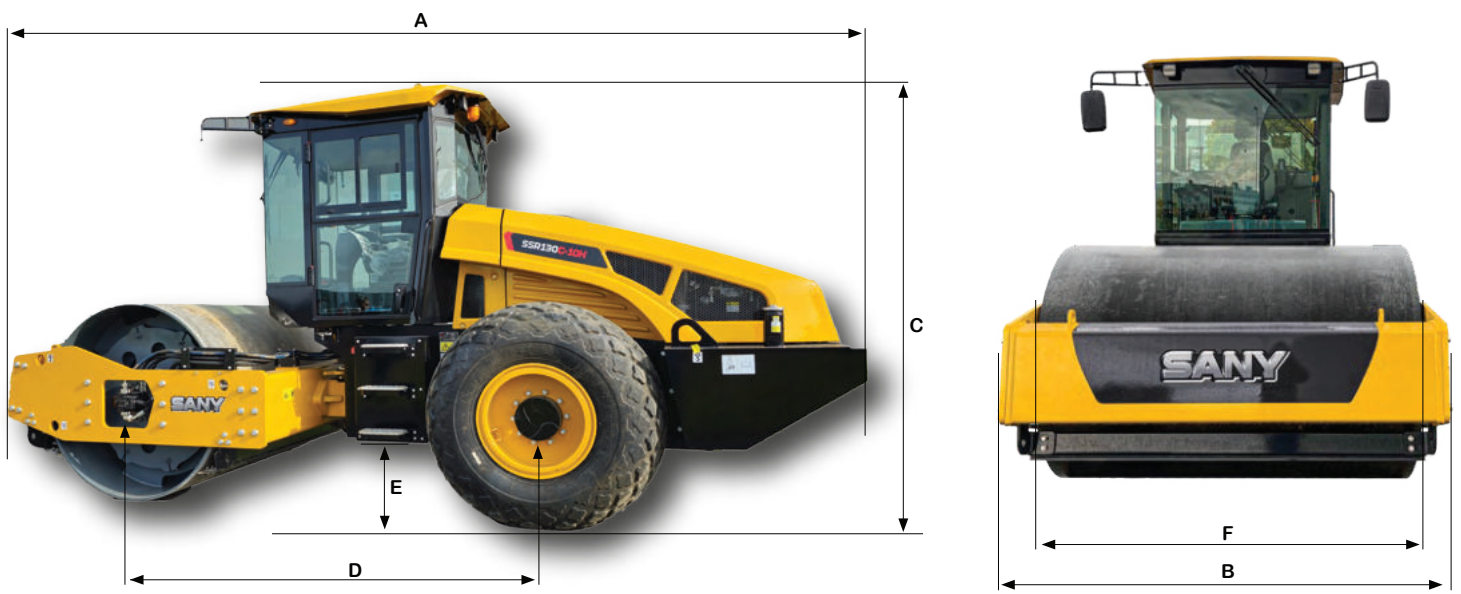


QUALITY CHANGES THE WORLD



Contact details





DIMENSIONS

A Transport length	5775 mm
B Transport width	2285 mm
C Transport height	3080 mm

D Wheelbase	2950 mm
E Ground clearance	450 mm
F Working width	2130 mm
Inner tyres turning radius	3613 mm

ENGINE

Model	Deutz TCD4.1 L4
Type	Water-cooled 4-cylinder diesel
Rated power	115 kW/2100rpm
Emission standard	Stage V
Fuel	Diesel

DRIVING CHARACTERISTICS

Ground speed (1)	5 km/h
Ground speed (2)	6.5 km/h
Ground speed (3)	8 km/h
Ground speed (4)	11.3 km/h
Working speed with vibration	6.5 km/h
Gradeability without/with vibration*	55%/50%

DRUM

Drum type	Smooth
Drum width	2130 mm
Drum diameter	1500 mm
Drum shell thickness	25 mm

WEIGHTS

Operating mass CECE	13260 kg*
Front axle load CECE	7150 kg
Rear axle load CECE	6110 kg
Drum static line load CECE	33.6 kg/cm

EXCITER SYSTEM

Frequency (1)	30 Hz
Frequency (2)	35 Hz
Amplitude (1)	1.9 mm
Amplitude (2)	1.2 mm
Centrifugal force (1)	280 kN
Centrifugal force (2)	180 kN
Exciter type	Circular oscillator

SERVICE CAPACITIES

Fuel tank	220 l
Hydraulic oil	80 l

STEERING

Type of steering	Articulated
Steering method	Hydrostatic
Steering angle, angle of oscillation +/-	35°/12°

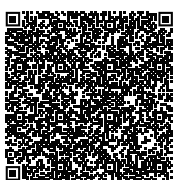
OPERATING COMFORT/CAB

ROPS-/FOPS cab	•
Multifunction control lever	•
Multifunction display	•
Air suspension comfort seat with adjustable armrest	•
LED work lights x4	•
USB charging socket	•
Radio (Bluetooth)	•
Climate Control (Air conditioning+Aux heater)	•

SAFETY

Direction indicator and hazard warning lights	•
Lockable battery disconnection switch	•
Seat contact switch	•
Reversing Camera & alarm	•
Rotating amber beacon	•
Emergency stop switch	•
Green seat belt indicator beacon	•
Lockable fuel tank cap	•

*weight and performance applies to UK spec only, including tractor tyres as standard. Specifications may be varied from time to time



Contact details



SANY
ROAD MACHINERY UK & Ireland

