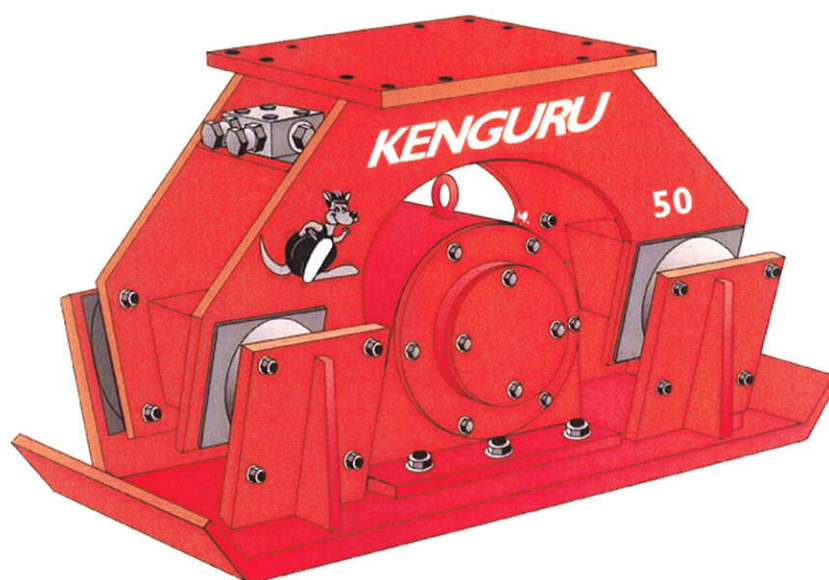




Compactor plates



Manufacturer:

RamBooms Oy
Yrittäjänkatu10 C
FIN-15170 LAHTI
Tel. +358 3 872 8030
Fax +358 3 872 8014

Kenguru Compactor Plates

OPERATING INSTRUCTIONS

Important!

Read carefully this manual before operating the Compactor Plate for the first time. You will protect yourself and others by following the instructions of this manual.

Valid for KENGURU Compactor Plate **TL15** only.

Note :

All specifications are subject to change without notice.

INSTALLATION

– Attach the compactor plate to excavator with a appropriate mounting bracket.

– The next prodecure is to connect the pressure and return hoses. A checkvalve is fitted between pressure and return line.

JIC 37° 7/8"

JIC 37° 7/8"

– It is most important that the return hoses from the plate via any ball or quick connect coupling are **fully open** before starting Compactor plate. **Failure to do so will damage the motor seals.** We do not recommend quick connect couplings.

– To ensure that the flow rates to motor will not reach an excessive back pressure, we recommend **20 l maximum oil** delivery from excavator.

- Compactor plates which are fitted without a valve system, will require testing the installation.
 - Start oil flow through flow meter and adjust to recommended flow rate of 20 l.
 - Check back pressure at the same time. 2 - 7 bar recommended.
If this back pressure cannot be obtained to model specification, a reduction of oil flow from the excavator is necessary via spool valve on the main hydraulic system. It is also recommended that the return oil is direct to tank. **Excessive back pressure will result in motor seal failure.**
- If all of the above check out, start the excavator and stretch out boom to ensure that the hoses will not pinch or be restricted. Place Compactor plate on ground surface with light down pressure and turn on oil flow to Compactor plate.

OPERATION

- Ensure all hoses are correctly fitted and tightened and that return lines are **fully open**.
 - Ensure that the flow rate and the pressure are correctly adjusted.
 - Turn Compactor plate on. Place on material to be compacted and apply down pressure for a period of 10-20 secs. This time will vary slightly depending on the type of material being compacted.
 - Best results are obtained with two passes; the first with lighter down pressure and the following with heavier down pressure. **Do not overvibrate.**
- Granular material can be compacted in ½ to 1 metre lifts and less with clay material. Moisture content is an important factor when compacting soil.

Always operate the compactor plate with outriggers firmly on surface. The plate weights more than the standard bucket.

On completion of daily work, do not place boom load onto vibration mounts overnight. Turn compactor plate on side or end to store.

MAINTENANCE

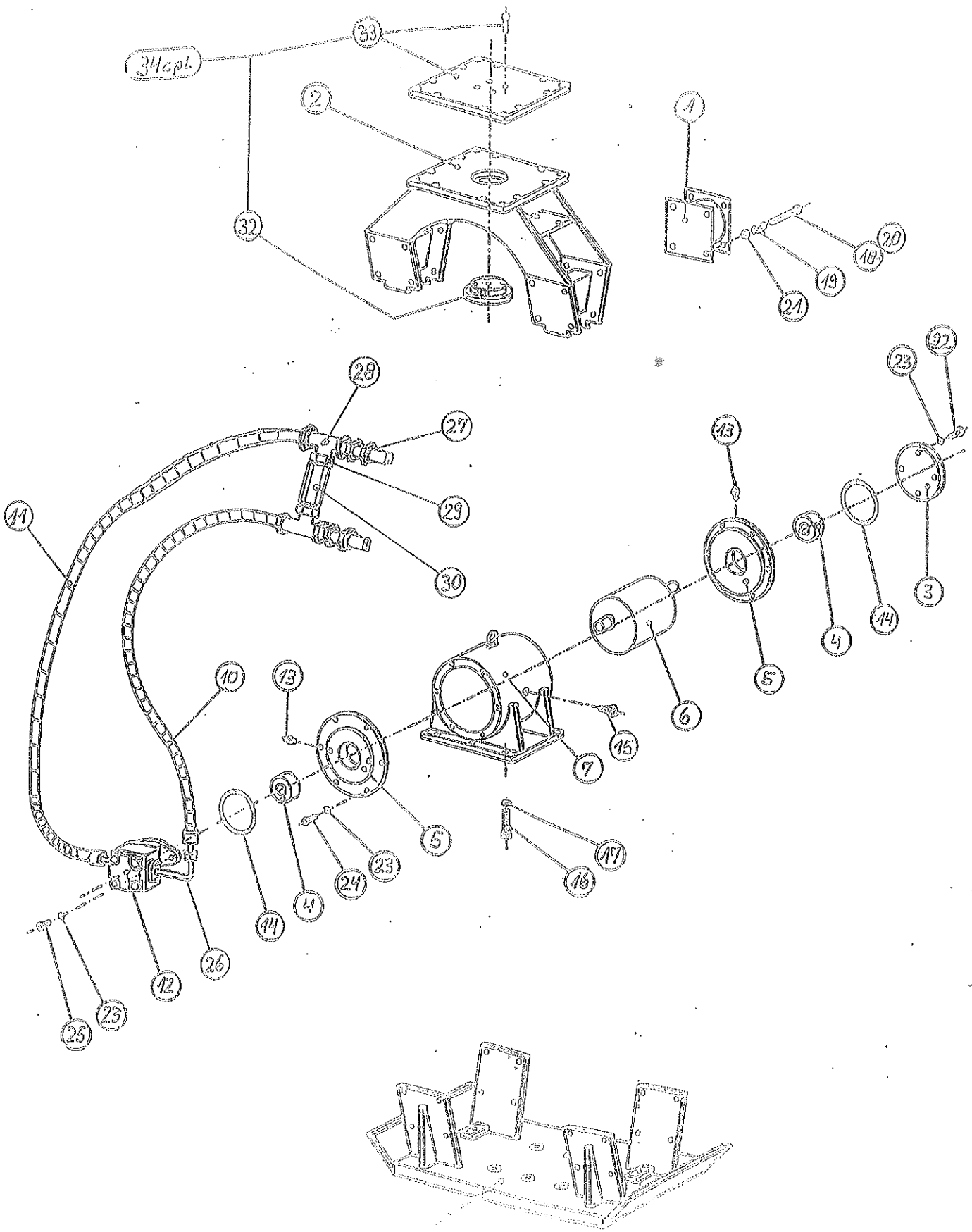
- Grease every 20 - 30 hours 2 strokes (Shell Retinax CP2, BP Energrease LS-EP2 or equal)
- Bearing inspection after approx. 400 hours.

Torque of the screws

Size	Torque
10 mm	44 Nm
12 mm	77 Nm
16 mm	190 Nm
20 mm	350 Nm

All fasteners are High Tensile Grade 8.8.

- **Re-tighten all fasteners after first 4 hours of use**, then periodical checks are most important to ensure maximum performance.
- Extended life of vibration mounts is possible by rotating 180 degrees periodically.
- When replacing bearings use only original spare parts as these are specially selected. Replacement bearing must be pressed into end plate by outer shell only, to avoid damage to bearing.



KENGURU TL15 Spareparts

Ref	Description	TL15	Qty
1	Vibration mounts	TL1528	4
2	Top Assembly	TL1520	1
3	Cover	TL1510	1
4	Bearing	TL1504	2
5	End Plate	TL1505	2
6	Excentric weight	TL1506	1
7	Housing	TL1507	1
8	Base assembly	TL1508	1
9			
10	Inlet hose JIC10F/2H08/JIC12F 90° L=600	TL1510	1
11	Return hose JIC10F/2H08/JIC12f 45° L=750	TL1511	1
12	Motor	TL2515A/20	1
13	Grease nipple	TL2536	2
14	Housing O-rings	TL1514	2
15	Housing Breather	81542649	1
16	Bolt M16x60 10.9 DIN 7991	TL1516	4
17	Nord Lock M16	90597	4
17a	Nyloc Nut M16	TL2504	4
18	Bolt M10x45 DIN 931	TL2520	24
19	Nord lock M10	91037	56
20	Bolt M10x40 DIN 7991	TL2520a	8
21	Nyloc nut M10 DIN 985	TL2518	32
	Nyloc M16	90540	4
23	Spring washer M10 DIN127	TL1523	18
24	Bolt M10x30 8.8. DIN 931	TL1524	12
25	Bolt M10x40 8.8. DIN 931	TL1525	2
26	Elbow 1610-12-12	TL1526	2
27	Nipple 1030-10-10	93023	2
28	Nipple 1230-10-10-10	93049	2
29	Nipple 6030-08-10	TL1259	2
30	Valve CV-08	TL3048V	1
	Plugg 900-10	915030	2
30	Motor seal kit	TL3050/TL3051	
32	Swivel plate	TL2549	

26.11.2010



AGENTS COPY

Warranty Registration Card

RamBooms Oy
Yrittäjänkatu 10
FIN 15170 LAHTI
FINLAND

Product: _____

Serial No: _____

Dealer:

Company: _____ Delivery Date: _____
City: _____ Country: _____

Customer:

Company Name: _____
Address: _____
Contact: _____ Phone: _____
Email: _____

Installation Inspection:

Made By: _____ Company: _____
Excavator Make: _____ Model: _____
Year of Manufacture: _____
Serial No: _____

Max total output of the pumps supplying attachment: _____ L/min
Measured relief valve setting in attachment line: _____ Bar
Measured oil flow into valve block: _____ L/min
Measured return line back pressure at motor _____ Bar
Measured oil flow at motor _____ L/min

Oil cooler in carriers circuit? Yes No
Oil cooler in attachment line? Yes No

Installation Inspection Completed: _____
Guarantee Begins: _____ Expires: _____

Delivery Accepted By Customer: Signature _____
Print name _____

Copy A must be returned to the address above immediately after the installation inspection is carried out and the card is filled out with corresponding information. No warranty claims concerning this machine will be handled until this is done

If the carrier is replaced with another during warranty period time, the installation to the new excavator must be inspected and approved along with corresponding information must be sent to the factory.